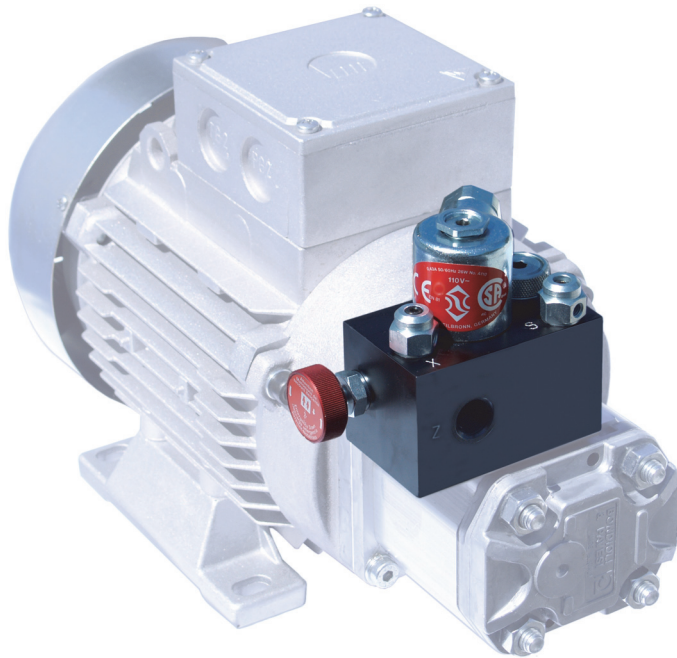


### For hydraulic car parking ports and material lifting platforms

The Blain car parking platform valve can be used in car parking applications where the platform needs to be raised above the ground to accommodate another car below the port. Alternatively this valve is also ideal for lifting material, cargo and suitable for dumbwaiters and goods lifts. The valve offers single up speed and adjustable down speed.



**Flow Range:** 1-24 l/min. (0.3 – 6.3 gpm)

**Viscosity:** 25-60 mm<sup>2</sup>/sec. at 40°C (15-35 cSt. at 120°F)

**Solenoids AC:** 24 V/1.8 A, 42 V/1.0 A, 110 V/0.5 A, 230 V/0.18 A, 50/60 Hz

**Solenoids DC:** 12 V/2.1 A, 24 V/1.1 A, 42 V/0.6 A, 80 V/0.3 A, 125 V/0.25 A, 196 V/0.14 A

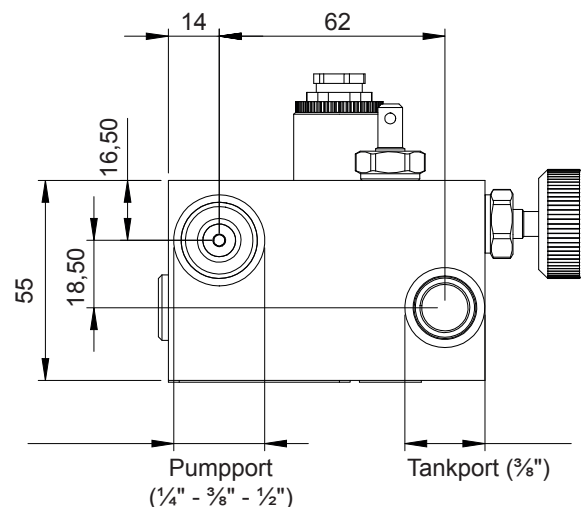
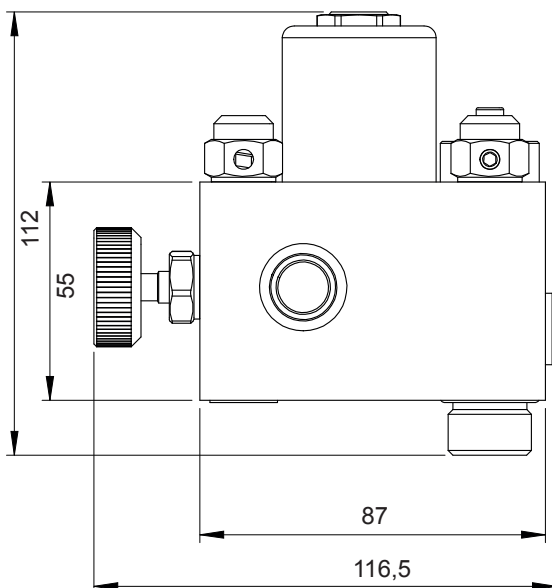
**Ports:** P Pump, Z Cylinder and T Tank

**Pressure Range:** 3-130 bar (45-1885 psi)

**Burst Pressure:** 600 bar (8702 psi)

**Insulation Class, AC and DC:** IP 68

Check valve, pressure relief valve and manual lowering are standard options which are integrated in the **GV** valve. Additionally a shut off valve is also provided to shut the flow of oil from the pump to cylinder and vice-versa. The valve offers a standard 3/8" cylinder and tank connection, whereas the pump connection is available in 1/4", 1/2" size.



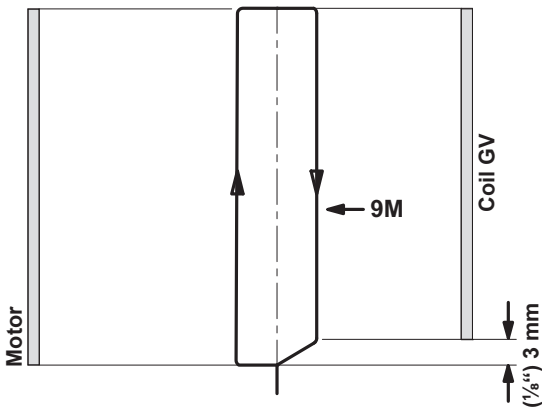
Blain Hydraulics GmbH Tel. 07131 2821-0  
 Pfaffenstrasse 1 Fax 07131 282199  
 74078 Heilbronn http://www.blain.de  
 Germany e-mail: info@blain.de



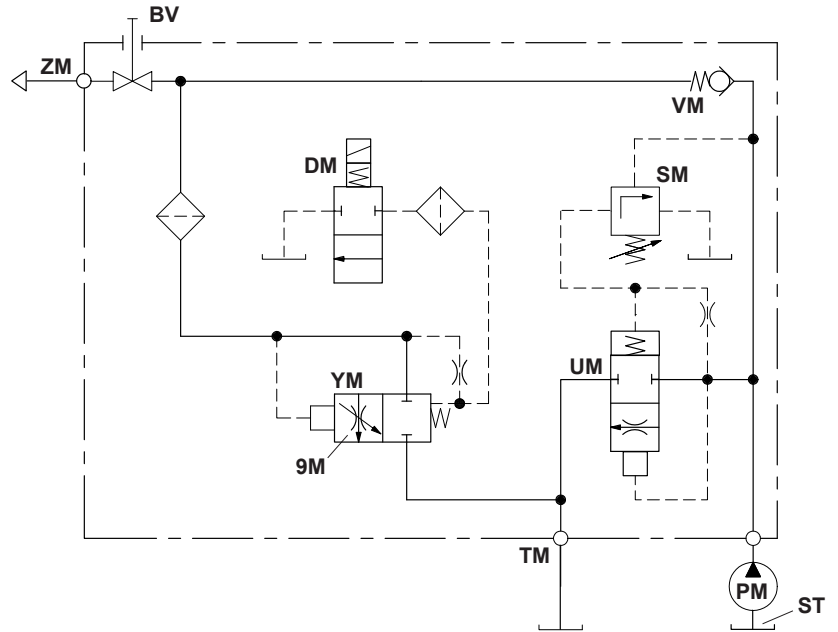
**Manufacturer of the Highest Quality:**  
 Control Valves for Elevators  
 Tank Heaters - Hand Pumps  
 Pipe Rupture Valves - Ball Valves



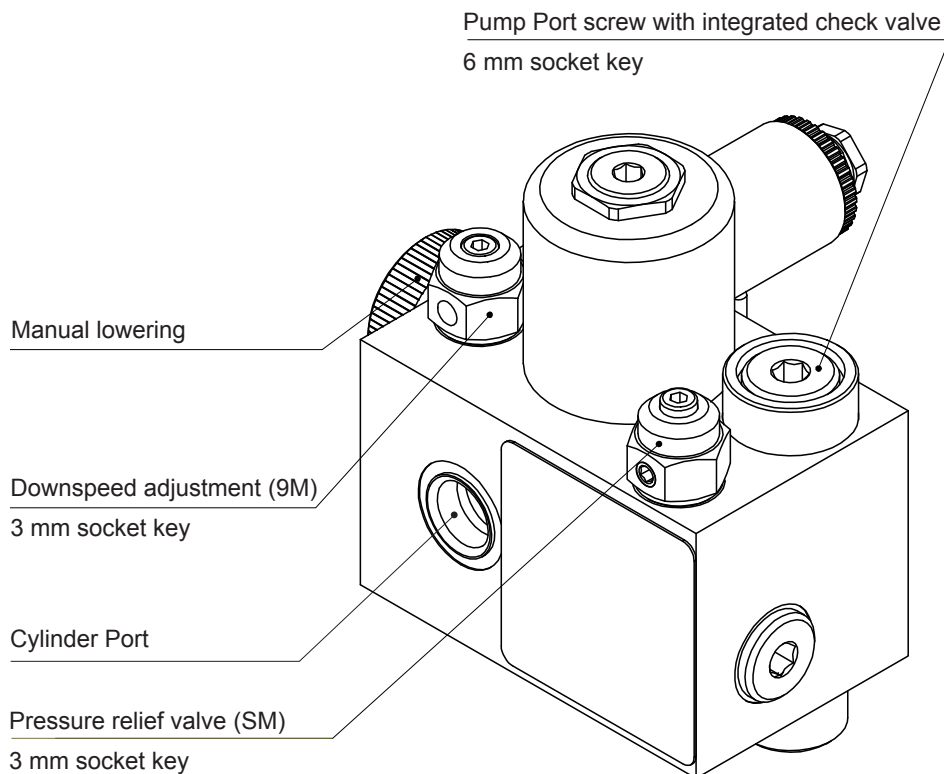
## Electrical Sequence



## Hydraulic Circuit



<b>DM</b>	Solenoid Down	<b>BV</b>	Shut Off Valve	<b>TM</b>	Return Connection
<b>9M</b>	Down Speed Adjustment	<b>ST</b>	Suction Tube	<b>UM</b>	Pilot Operated Relief Valve
<b>SM</b>	Pressure Relief Valve Adjustment	<b>ZM</b>	Cylinder Connection	<b>YM</b>	Pilot Operated Down Valve
<b>VM</b>	Check Valve				



### GV Adjustments

**Up Speed** is determined by the pump output and the effective diameter of the cylinder system.

**SM Relief Valve.** 'In' (clockwise) produces a higher, 'out' (c-clockwise) a lower maximum pressure setting.

**9M Down Speed.** When solenoid **DM** is energised, the car will travel downwards at a speed according to the setting of adjustment **9M**, (3 mm socket key). Turning 'in' (clockwise) provides a slower, turning 'out' (c-clockwise), a faster down speed.

### While ordering

Please specify pump flow, solenoid coil voltage & maximum operating pressure.